



nassli
LED LIGHTS

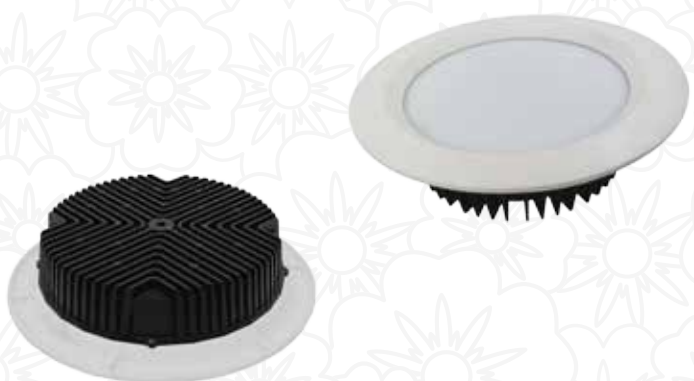
LED DOWN LIGHT CRX28-3-V2

Application:

It can be widely used for decoration, shopping malls, Palaces, Trade shows, Supermarkets, Conference Halls, Hotels, Schools, Hospitals, Meeting room Factories, Theater, Cinemas, Kitchens and Corridor etc...

Feature:

The product used as pure light source , using LED technology human and environment friendly,no PB, Hg nor UV.
High power saving fixture, no decay and color temperature shift.
Can be dimmable (through direct control or via network).



SPECIFICATIONS

| ITEM | DESCRIPTION |
|----------------|-----------------------------------|
| Input Voltage | 220 - 240 V A C |
| Frequency | 50 / 60 H z |
| Power factor | >98% |
| CCT | 2700K, 3000K, 4000K, 6000K |
| CRI | >83% |
| LED Efficiency | 120-130Lm/W |
| Power supply | Tridonic / Nassli |
| LED Type | Osram / Epistar |
| Materials | Aluminum, PC, & Friendly material |
| Beam Angle | 120° |
| Life Time | >50,000 Hour |
| Operating Temp | -20°C to +55°C |
| Storage Temp | -40°C to +65°C |
| Certifications | CE, SELV and ISO |
| Mounting | Recessed |
| IP Rating | IP20 / IP44 |
| Dimmable | On Request |
| Emergency | On Request |
| Warranty | 5 Years |

| Order code | Dimensions(mm) | Power(Watt) | Lumen |
|--|----------------|-------------|-------|
| NSL-CRX28-3-V2-N200-30W-XXK-SMD-NS-IP20 | W42 H218 Ø200 | 30 | 3600 |
| NSL-CRX28-3-V2-N200-30W-XXK-SMD-TD-XX-IP20 | W42 H218 Ø200 | 30 | 3600 |
| NSL-CRX28-3-V2-N200-35W-XXK-SMD-NS-IP20 | W42 H218 Ø200 | 35 | 4200 |
| NSL-CRX28-3-V2-N200-35W-XXK-SMD-TD-XX-IP20 | W42 H218 Ø200 | 35 | 4200 |