



**nassli**  
LED LIGHTS

## LED STRIP LIGHT YT

### Application:

It can be widely used for decoration, shopping malls, Palaces, Trade shows, Supermarkets, Conference Halls, Hotels, Schools, Hospitals, Meeting room Factories, Theater, Cinemas and Corridor etc...

### Feature:

LED strip lighting is becoming an immensely popular modern decorating style that a lot of people are now enjoying. If you'd like your lights to look professional and really elevate the mood and tone of a room, read on. In this blog, we explore the popular trend and how you can successfully implement LED strip lights in your home.

## SPECIFICATIONS

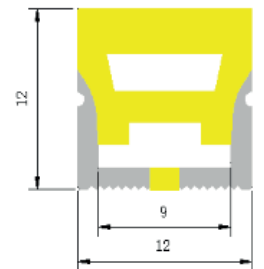
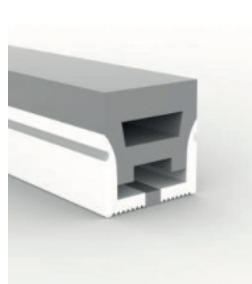
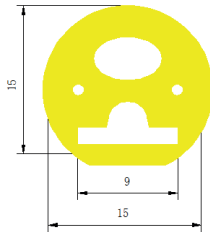
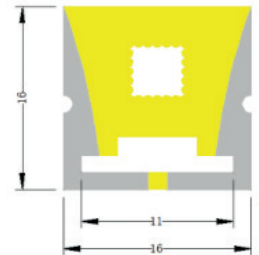
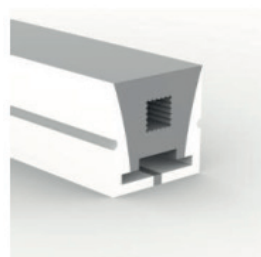
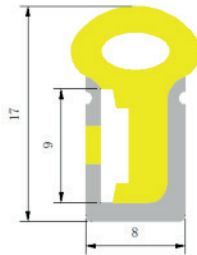
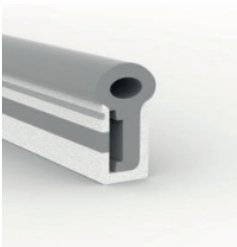
ITEM	DESCRIPTION
Input Voltage	24 VDC
Power factor	>90%
CCT	3000K, 4000K, 5000K, 6000k, RGB
CRI	>80%
LED Efficiency	100Lm/W
Power supply	Tridonic / Nassli
LED Type	Osram
Materials	PC, & Friendly material
Beam Angle	180°
Life Time	>50,000 Hour
Operating Temp	-20°C to +55°C
Storage Temp	-40°C to +85°C
Certifications	CE, SELV, SASO
Mounting	Hidden Suspended, Surface Mounted
IP Rating	IP65
Dimmable	On Request
Emergency	On Request
Warranty	5 Years



**5** Year  
Warranty

**nassli**  
LED LIGHTS

# LED STRIP LIGHT YT



Order code	Dimensions(mm)	Power(Watt/M)	Lumen
NSL-STR-YT1212-10W/M-XXK-SMD-IP65	XX*12*12	10W/M	1000
NSL-STR-YT0817-10W/M-XXK-SMD-IP65	XX*08*17	10W/M	1000
NSL-STR-YT1515-10W/M-XXK-SMD-IP65	XX*15*15	10W/M	1000
NSL-STR-YT1616-10W/M-XXK-SMD-IP65	XX*16*16	10W/M	1000