



**nassli**  
LED LIGHTS

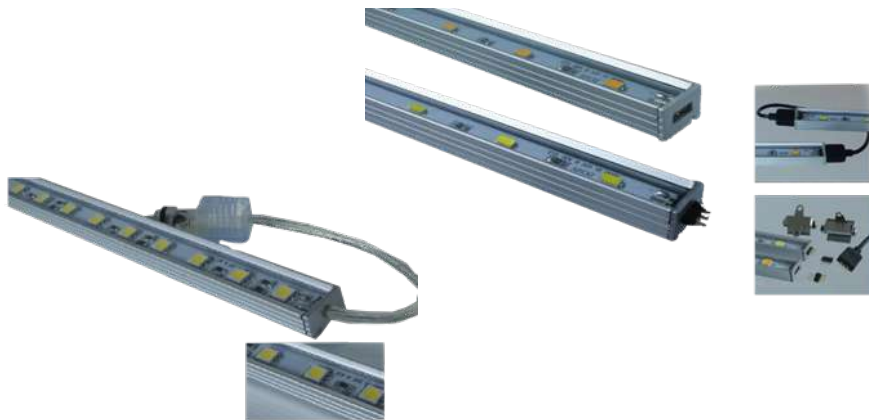
# LED ALUSTRIP 14.5

## Application:

It can be widely used for decoration, shopping malls, Palaces, Trade shows, Supermarkets, Conference Halls, Hotels, Schools, Hospitals, Meeting room Factories, Theater, Cinemas, Kitchens and Corridor etc...

## Feature:

The products used as pure light source , using LED technology human and environment friendly, no PB, Hg nor UV.  
High power saving fixture, no decay and color temperature shift.  
Can be dimmable (through direct control or via network).



## SPECIFICATIONS

ITEM	DESCRIPTION
Input Voltage	24 V D C
Power factor	>98%
CCT	3000K,4000K,5000K, 6000K, RGB
CRI	>80%
LED Efficiency	110-Lm/W
Power supply	Tridonic / Nassli
LED Type	Osram / Epistar
Materials	Aluminum, PC, & Friendly material
Beam Angle	160°
Life Time	>35,000 Hour
Operating Temp	-20°C to +55°C
Storage Temp	-40°C to +65°C
Certifications	CE, SELV and ISO
Mounting	Recessed, Wall Mounted, Hidden
IP Rating	IP20 / IP65
Dimmable	On Request
Emergency	On Request
Warranty	5 Years

Order code	Dimensions(mm)	Power(Watt)	Lumen
NSL-ALSTR-GL-14.5W/M-XXK-SMD-IP65	1000*15*9	14.5W/M	1100LW/M
NSL-ALSTR-GL-14.5W/M-RGB-SMD-IP65	1000*15*9	14.5W/M	1100LW/M